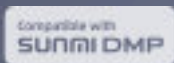


Smart Desktop Terminal

SUNMI T3 Family - T3 80MM New

Power meets elegance at your counter.



- **New platform to unleash powerful performance.**

Enjoy a 20% performance boost, with a Qualcomm octa-core processor offering a clock speed up to 2.4GHz and built with a 6nm process technology, along with 4GB RAM+64GB ROM of robust memory.

- **Sleek Z shape. Consistent excellence in design.**

The standout Z-shaped design offers elegance from every angle.

A metal die-casting process provides a slim yet sturdy body.

The hidden cable system keeps your workspace organized and clutter-free.

- **T3 80mm built-in high-speed printer by Seiko.**

80mm thermal printer provides top printing speed of 250mm/s and an impressive lifespan of 150km.

Easy and cost-effective maintenance with simple print engine replacements.

- **Enhanced user experience with new features.**

Triple displays provide versatile content presentation and seamless multi-screen integration. The NFC readers on two sides of the screen simplify membership management. The power button features fingerprint recognition for instant unlocking and secure app access.



Modular design for easy maintenance.

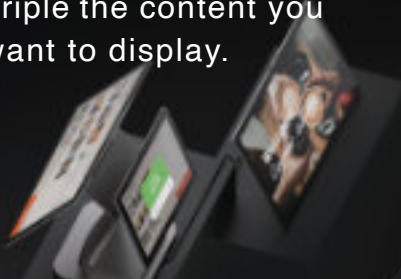
Powered by Qualcomm

20% Performance boost.

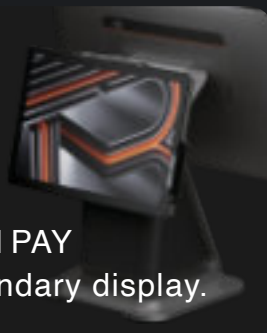


*Data from SUNMI Lab.

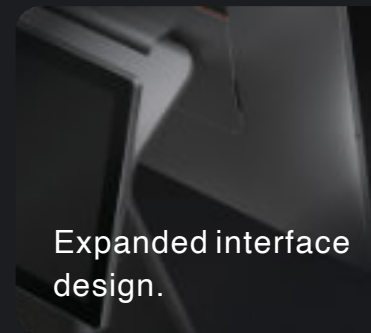
Triple the content you want to display.



Use CPad PAY as a secondary display.



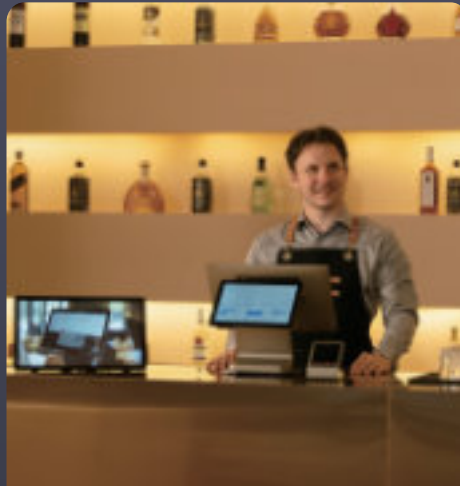
Expanded interface design.



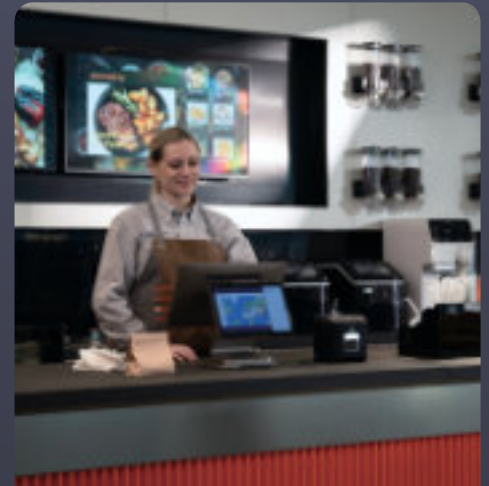
SUNMI T3 80MM Application Scenario



Boutique Store



Bar Counter



Café

SUNMI T3 80MM Tech Specs

CPU

Octa-core, up to 2.4GHz

OS

SUNMI OS 4.0
(Based on Android 13)

Memory

4GB RAM + 64GB ROM
Extended Micro SD Card
Slot Up to 2TB

Displays

15.6" FHD, 1920*1080 Pixels,
IPS
Capacitive Multi-touch Screen,
Anti-fingerprint Coating

Printer

High-speed thermal printer:
250mm/s
Paper roll width/diameter:
80mm/80mm

GMS

Supported (Optional)

Buttons

1*Power button
1*Volume button (hidden)

Card Slots

1*Micro SIM (4G Version)
1*Micro SD

Interface

3*USB 2.0 Type-A
1*USB 3.0 Type-A
1*USB Type-C
2*Micro USB
1*Micro USB debug
1*RJ45
1*RJ11
1*RJ12
1*DC

Cellular

4G/5G (Optional)

Wi-Fi

5GHz/2.4GHz
IEEE802.11a/b/g/n/ac

Bluetooth

Bluetooth 5.0, Support BLE

Positioning

GPS/Glonass/Beidou/
Galileo (4G Version)

Cameras

5MP FF Front Camera

NFC

Tap on screen

Fingerprint

Supported

Audio

2*2W Speaker
1*Microphone

Sensors

Gravity sensor

Adapter

Input: 100-240V AC
Output: 24V/2.5A DC

Net Weight

3.6kg

Gross Weight

6.5kg

Environment

Operating Temperature:
0°C~40°C
Storage Temperature:
-20°C~60°C
Operating Humidity:
5% to 95% non-condensing

Accessories (Optional)

15.6" separate monitor: FHD 1920*1080, capacitive multitouch display
10.1" separate monitor: HD 1280*800, capacitive multitouch display
MSR Card Reader
Cash drawer mount
58mm paper guide
Elevated rubber feet

Dimensions(L*W*H)

373*200*373 mm

